

**DOUBLE BENDING LOAD CELL**  
**CAPACITIES: 10 - 300 Kg.**

**MODEL 300**



**MODEL 300i**

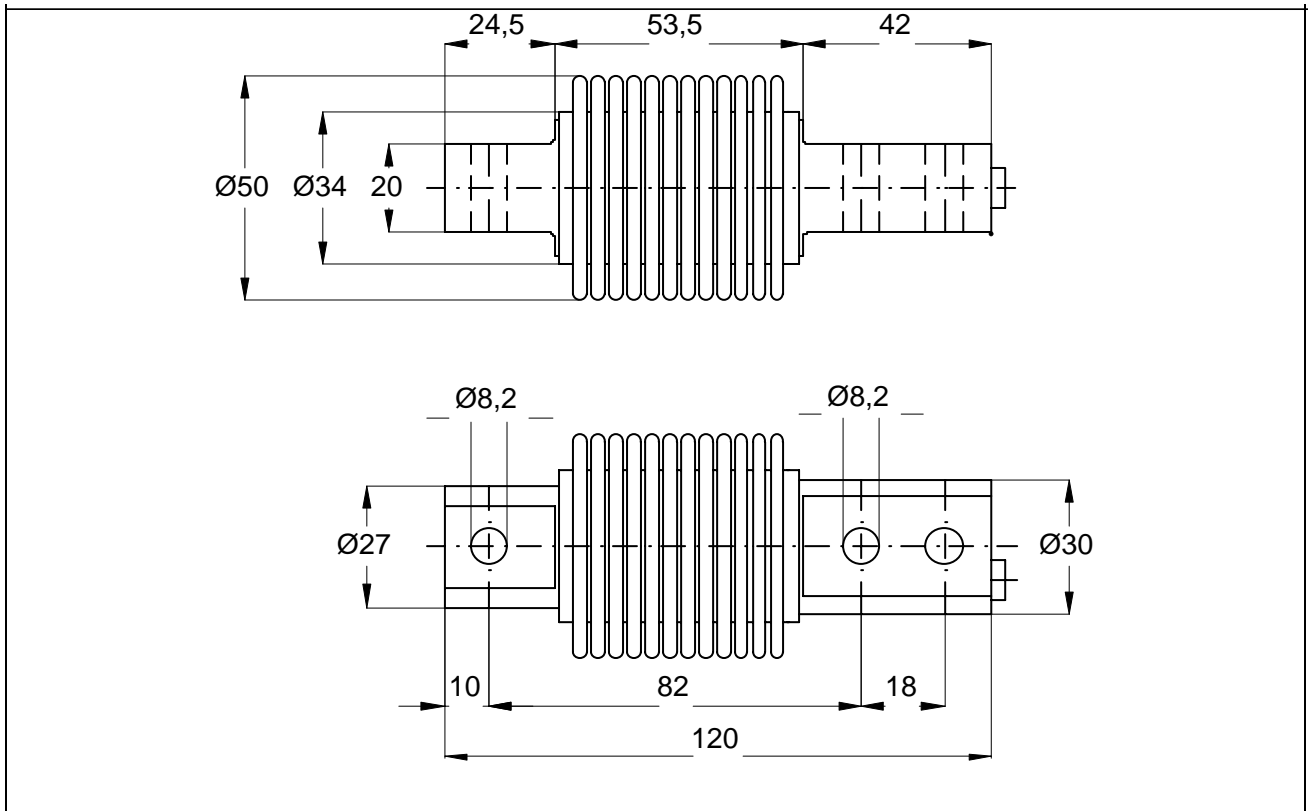
## COMPLETE SERIE OF LOAD CELLS

### VERSIONS

**300 a      NICKEL-PLATED BODY AND STAINLESS STEEL BELLOW**

**300 i      FULLY STAINLESS STEEL**

- **DOUBLE BENDING LOAD CELL**
- **3000 DIVISIONS O.I.M.L. R60 CLASS C**
- **SIMPLE TO INSTALL**
- **FULLY WELDED STAINLESS STEEL CONSTRUCTION**
- **HERMETICALLY WELDED, PROTECTION CLASS IP 68, ( EN 60529)**
- **STANDARD MOUNTING DIMENSIONS**
- **EASY TO INSTALL IN PLATFORMS, HOPPERS, TANKS ECT.**
- **THEY ARE ALSO AVAILABLE IN HIGHER CAPACITIES**



## SPECIFICATIONS

	UNITS	C3
Standard load ranges	Kg	10-20-30-50-75-100-150-200-250-300
V. min.		E <sub>max</sub> /7.500
Min. dead load	%	0
Safe service load	%	150
Ultimate Load	%	200
Combined Error	%	<0,017
Repeatability	%	<0,015
Temp. Coeff. of Zero	%/°C	<0,002
Temp. Coeff. of Span	%/°C	<0,0015
Creep in 30 Minutes	%/°C	<0,016
Compensated Temp.	°C	-10 to +40
Operational Temp.	°C	-20 to +60
Full Load Output	mV/V	2,0 +/- 0,1%
Excitation, dc or ac	Volt	10( max.15)
Input Resistance	Ohms	400 +/- 20
Output Resistance	Ohms	350+/-3
Output at Zero Load	%	<2
Insulation	M Ohms	>5000
Protection and deflection		IP 68 and < 0,4 mm

## ELECTRICAL CONNECTION

CABLE	PVC, Ø4mm;3 meter
+EXCITATION	GREEN
-EXCITATION	BLACK
+SIGNAL	RED
-SIGNAL	WHITE